

# \$14 - 15810 102 Street, Rural Grande Prairie No. 1, County of

MLS® #A2112373

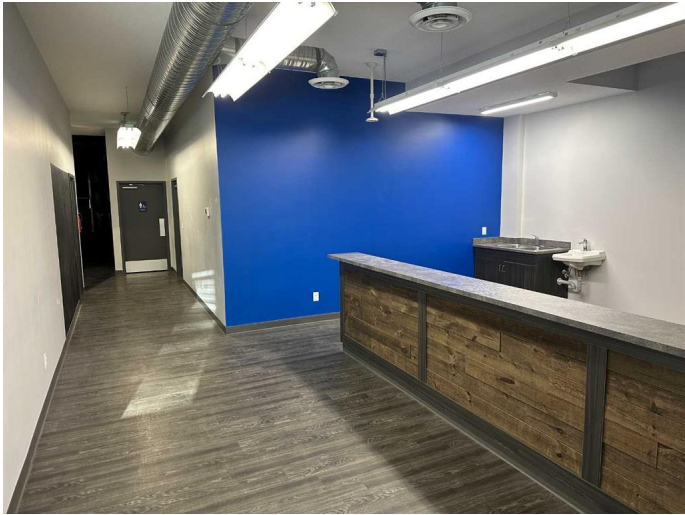
**\$14**

0 Bedroom, 0.00 Bathroom,  
Commercial on 0.00 Acres

Althen Corner, Rural Grande Prairie No. 1,  
County of, Alberta

Discover this unique 4,671 SF commercial industrial space in Althen Corner, offering a reception area, office, large meeting room, and two bays with 14' x 14' overhead doors at the rear. Formerly a gym, this versatile space is suitable for light industrial, retail, or mixed-use.

The Landlord is open to a TI allowance for improvements. Priced at \$14.00 PSF NNN with estimated triple net costs of \$4.50 PSF. Monthly Rent: (4,671 Sq.ft @ \$14 PSF = \$5,449.00/month + Estimated Additional Rent \$4.50 \* 4,671 Sq.ft = \$1,751.63 Total Monthly Rent = \$7,200.63 plus GST and utilities.) Call your Commercial Realtor® for more information or to book a showing today.



Built in 2015

## Essential Information

MLS® #	A2112373
Price	\$14
Bathrooms	0.00
Acres	0.00
Year Built	2015
Type	Commercial
Sub-Type	Mixed Use
Status	Active

## Community Information



Address	15810 102 Street
Subdivision	Althen Corner
City	Rural Grande Prairie No. 1, County of
County	Grande Prairie No. 1, County of
Province	Alberta
Postal Code	T8X 0K7

### **Additional Information**

Date Listed	March 19th, 2024
Days on Market	444
Zoning	CC

### **Listing Details**

Listing Office	RE/MAX Grande Prairie
----------------	-----------------------

Data is supplied by Pillar 9â„¢ MLSÂ® System. Pillar 9â„¢ is the owner of the copyright in its MLSÂ® System. Data is deemed reliable but is not guaranteed accurate by Pillar 9â„¢. The trademarks MLSÂ®, Multiple Listing ServiceÂ® and the associated logos are owned by The Canadian Real Estate Association (CREA) and identify the quality of services provided by real estate professionals who are members of CREA. Used under license.