

\$424,999 - 10 Waskasoo Avenue, Penhold

MLS® #A2105866

\$424,999

0 Bedroom, 0.00 Bathroom,
Land on 1.91 Acres

Oxford Landing, Penhold, Alberta

Located on the northwest corner of Highway 42 and Waskasoo Avenue in Penhold, this 0.65 acre parcel, to be subdivided, is available for sale. All groundwork and gravel has been completed, and there is a 26 stall paved parking lot on the property with space to construct a 5,373 SF building on the site. The property is in the heart of new commercial and residential development, with close proximity to the Penhold Regional Multiplex and Penhold Crossing Secondary School.

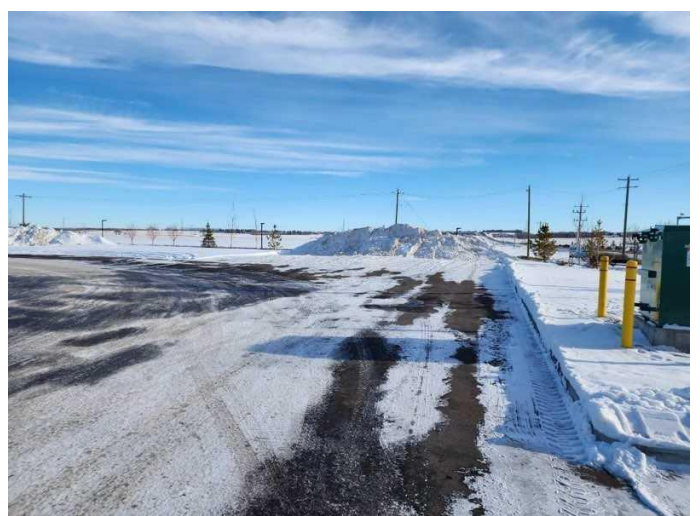
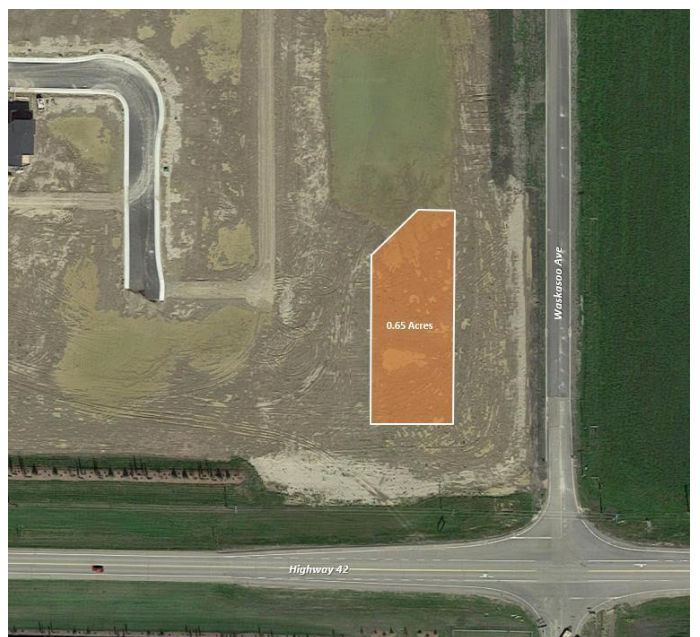
Essential Information

MLS® #	A2105866
Price	\$424,999
Bathrooms	0.00
Acres	1.91
Type	Land
Sub-Type	Commercial Land
Status	Active

Community Information

Address	10 Waskasoo Avenue
Subdivision	Oxford Landing
City	Penhold
County	Red Deer County
Province	Alberta
Postal Code	T0M 1R0

Additional Information



Date Listed	February 6th, 2024
Days on Market	536
Zoning	C2

Listing Details

Listing Office	RE/MAX Commercial Properties
----------------	------------------------------

Data is supplied by Pillar 9â„¢ MLSÂ® System. Pillar 9â„¢ is the owner of the copyright in its MLSÂ® System. Data is deemed reliable but is not guaranteed accurate by Pillar 9â„¢. The trademarks MLSÂ®, Multiple Listing ServiceÂ® and the associated logos are owned by The Canadian Real Estate Association (CREA) and identify the quality of services provided by real estate professionals who are members of CREA. Used under license.